

ELEVATOR

STORMWATER ATTENUATION TANK UNDER CAR PARK

Location: Peschiera del Garda, Italy

Designer: Studio Zanetti

Tank depth: 6.5 ft

Tank surface: 604 sqyd

Tank capacity: 264,200 gal (USA)

Load type: Cat. 1 (132,240 lb)

Product used: Elevator Tank

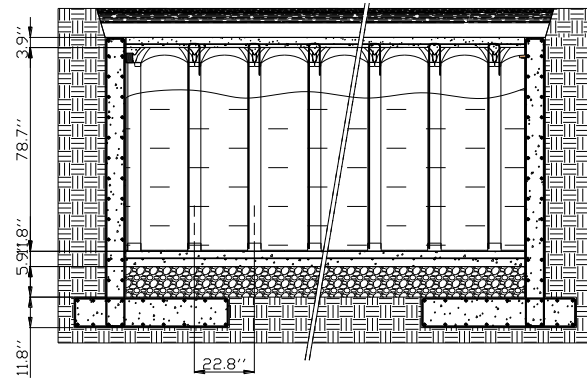


Fig. 1 – cross-section



Fig. 2

Creation of the ground slab and perimeter walls, including the holes for the water inlet and outlet tubes.



Fig. 2

Manual installation of the ELEVATOR TANK forming system, 6.5 ft high.

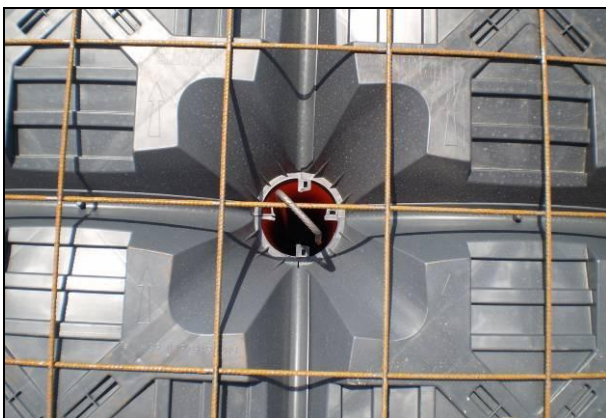


Fig. 3

Detail of the reinforcement of the little pillars with u-bent Ø 6 mm rebar reaching the end of the pipe.



Fig. 4

Finished car park.

Elevator Tank was chosen as a large amount of stormwater needed to be stored with only a relatively small surface available. Thanks to the depth of 6.5 ft of the system 264,200 gal of water are stored in just 604 sqyd. A part of the water collected is connected to the fire hydrants and is available to firefighters.