

SKYDOME

COMMERCIAL BUILDINGS

Skydome

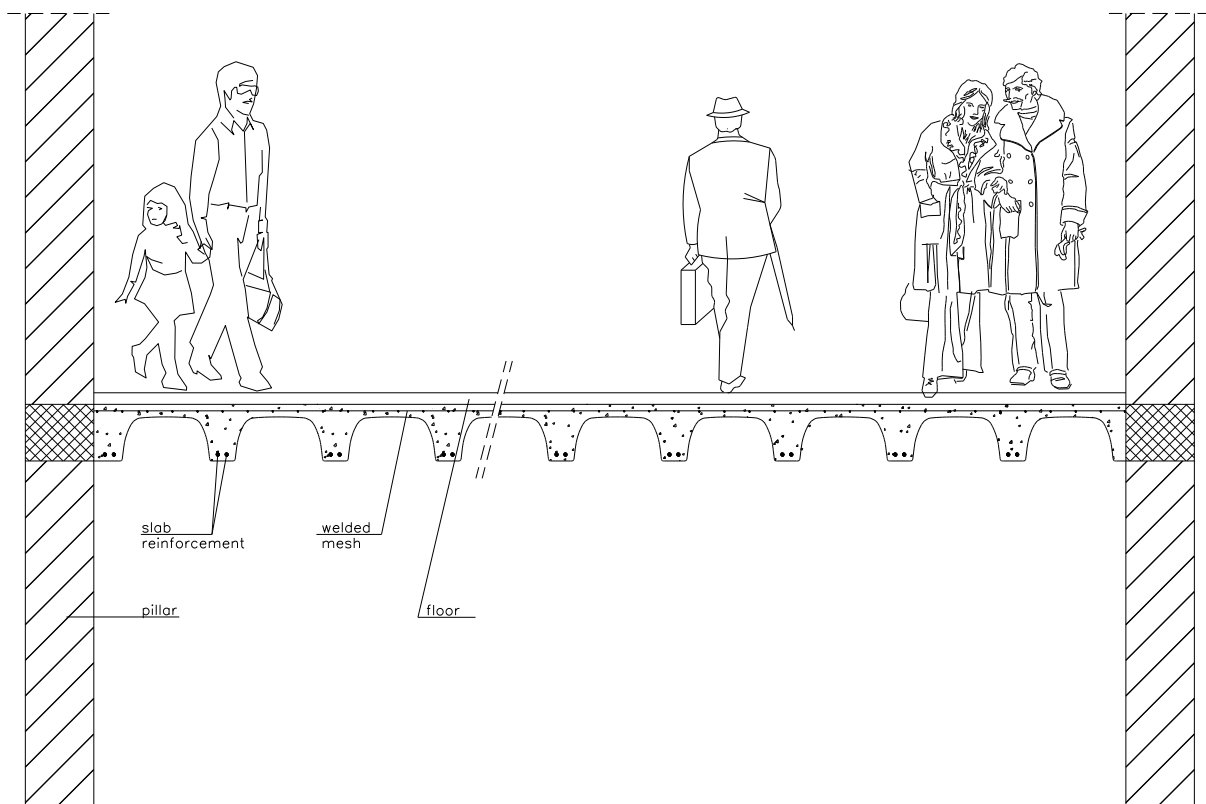
SKYDOME is a formwork for two-way ribbed slabs (waffle slabs). This arrangement gives great structural advantages for both static and dynamic loads thanks to the reduced self-weight and to the curved cross-section of the ribbing.

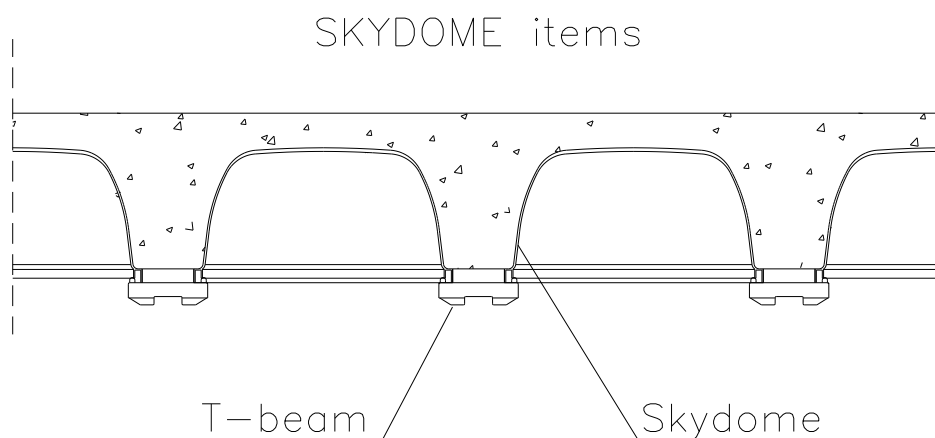
The waffle slab formed is suitable for buildings open to the public and subject to crowding.

The finish is smooth and pleasant to the eye, it can be left in plain sight in the as-poured condition.

Advantages

- Reduction of the slab's self weight
- Better seismic behaviour
- Decreased load on the foundation
- Smaller size of the perimeter beams
- Better load distribution on the columns, which can be decreased in size
- Creation of two-way ribbing with variable cross-section
- Smooth finish, concrete can be left in sight as-is





GENERAL TECHNICAL CHARACTERISTICS

Max slab span	T-beam Width	h of Skydome	h of r.c. cover	total h of slab
[ft]	(L1) [in]	[in]	(H1) [in]	(H2) [in]
19.70	4.72	7.87	1.96	9.84
22.96	6.23	7.87	1.96	9.84
26.24	6.23	11.81	1.96	13.78
*refers to a square plan with beam reinforced with 0.622 [sqin]				

Cost advantages	Job-site advantages
<ul style="list-style-type: none"> • Lower quantity of steel • Less concrete vs. an equivalent full concrete slab • Cost effective logistics and easy storage • Initial investment amortised after few pours 	<ul style="list-style-type: none"> • Fast and easy to erect • Load-bearing before the pour, can be installed from below • As plastic does not stick to concrete, stripping is easy and does not require releasing agents