

SUPERMARKET ROOF TOP CAR PARK VENTILATED PAVING

Location: La Valletta, Malta

Project: Supermarket roof top car park

Structure: ventilated paving

Total surface: 598 sqyd

Product used: MINIMODULO H6



Fig. 1
Installation of Minimodulo on the existing slab



Fig. 2
Detail of the access ramp



Fig. 3
Pour of the stiffening beams

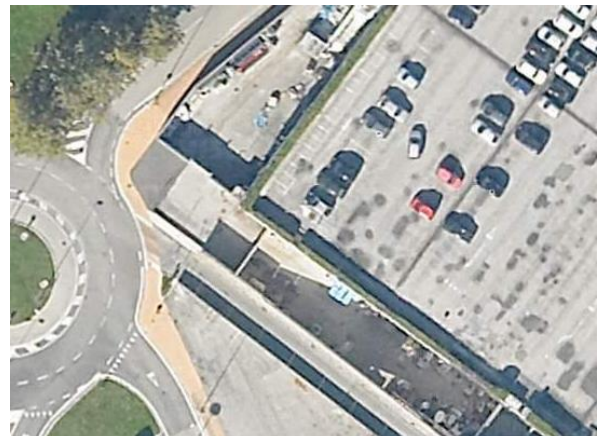


Fig. 4
Aerial view of the finished supermarket

Minimodulo H6 was used to create a thermal insulation over an existing slab; the void was also used for the passage of pipes for electric cables. Minimodulo forms a great number of supports which makes the top pour sufficiently load-supporting for a roof top car park.