

MINIMODULO

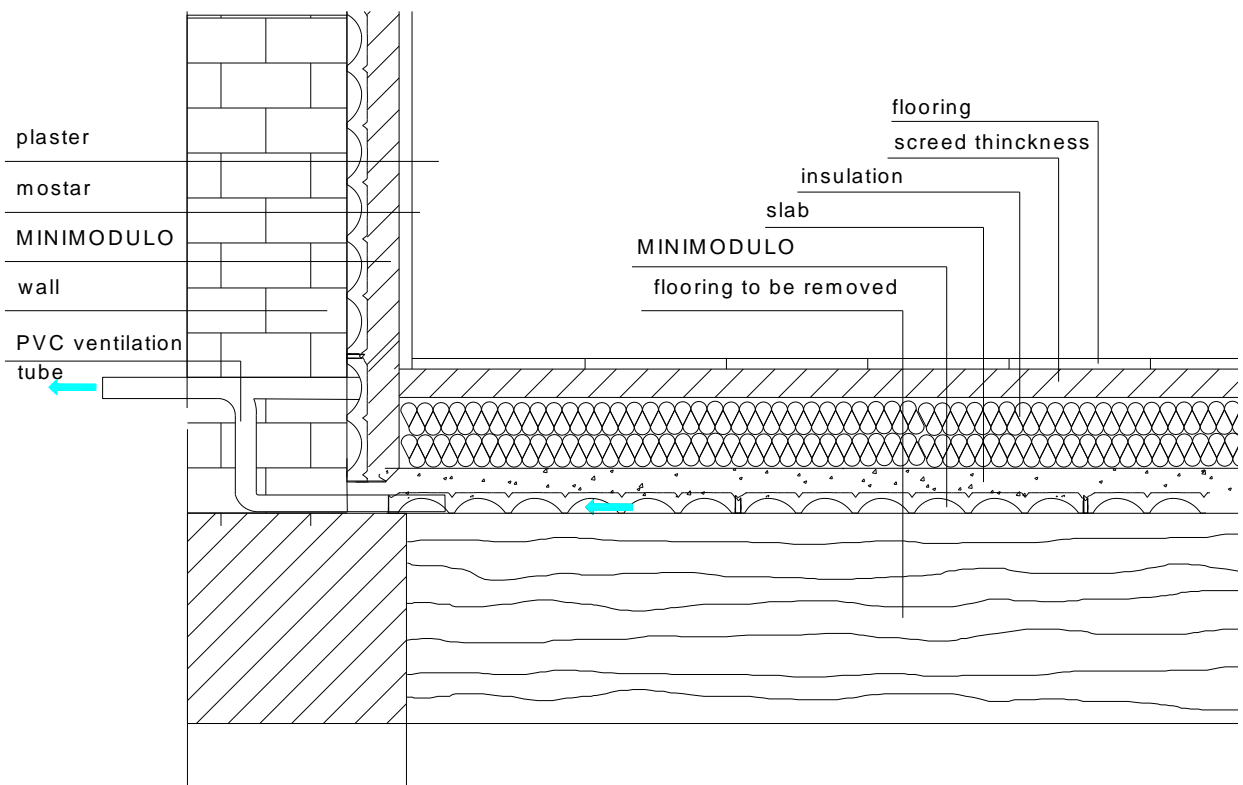
LIGHTWEIGHT SLAB

Minimodulo

Minimodulo is used to decrease the weight of floors, especially if made of timber. The shape of the forming system guarantees high load-bearing capacity; the voids make it possible to ventilate the slab reducing problems of moisture, condensation, molds. The layer of air also has a positive influence on the acoustic insulation performance of the floor.

Advantages

- Natural ventilation
- Eliminates moisture and condensation
- Makes the floor lighter
- Reduces heat transmission
- Acts as an acoustic insulation
- Creates a high load-bearing structure



Applications

New roof slabs

Floor built on existing roof slab

Timber slabs