

# MODULO

## FREEZER WAREHOUSES

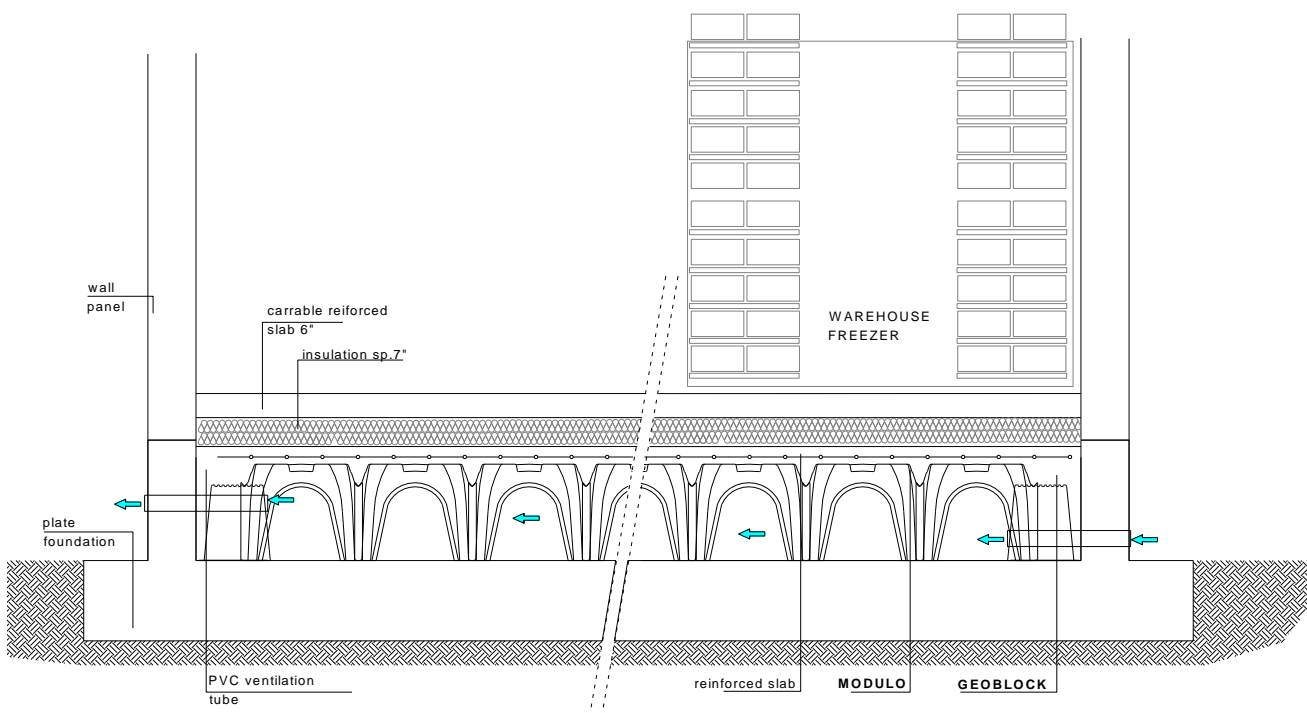
### MODULO System

Modulo System is particularly useful in the case of freezer warehouses, as it creates a crawl space where possible percolating liquids can be collected and protect the underlying ground slab from frost damage.

Modulo System shapes the concrete into a ribbed slab which can support even industrial loads.

### Advantages

- Natural ventilation in all directions
- High load-bearing capacity structure
- Collects percolating liquids
- Eliminates moisture
- Allows the passage of pipes and systems
- Dispersion of Radon gas



## GENERAL TECHNICAL CHARACTERISTICS MODULO H15 – H50

Eurocode Category	Imposed + permanent loads [lb/sqin]	Slab [in]	lean mix [in]	Pressure on the ground [lb/sqin]	Minimum amount of reinforcing steel [sqin/ft]	Cover [in]
Special case	4.98	2.36	4	64.3	0.119	1.18
			2+8	18.5	0.119	1.18
			2+12	10.8	0.119	1.18
	6.40	2.36	4	80.9	0.119	1.18
			2+8	23.3	0.119	1.18
			2+12	13.5	0.119	1.18
	7.82	2.36	4	97.4	0.119	1.18
			2+8	28.0	0.119	1.18
			2+12	16.3	0.119	1.18

reference standard for accidental loads is Eurocode.

### FIELD OF APPLICATION:

Industrial freezer warehouses

