

# MODULO

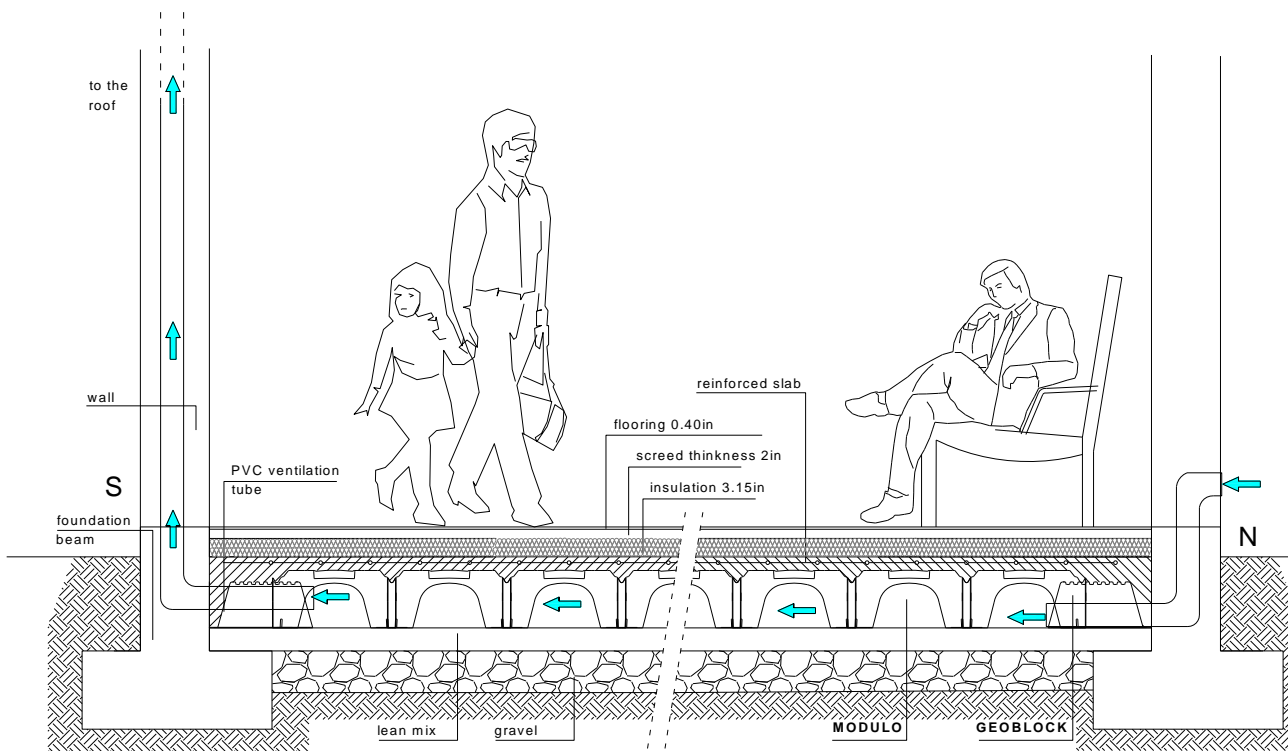
## PUBLIC BUILDINGS

### MODULO System

Modulo System is used in public buildings to create room for the passage of services and systems. The high load-bearing capacity of the structure created with the Modulo forming system allows high loads.

### Advantages

- Natural ventilation in all directions
- Elimination of ground moisture
- Dispersion of Radon gas
- Can be used for a monolithic foundation
- De-stressing of the foundation beams
- Allows the passage of pipes and systems
- High load-bearing capacity structure



**GENERAL TECHNICAL CHARACTERISTICS  
MODULO H30 – H70**

Eurocode category	Imposed + permanent loads [lb/sqin]	Slab [in]	Lean mix [in]	Pressure on the ground [lb/sqin]	Minimum amount of reinforcing steel [sqin/ft]	Cover [in]
Cat C5	1.00	3.15	-	74.1	0.119	1.18
			2	26.1	0.119	1.18
			2+8	3.8	0.119	1.18
	1.07	3.15	-	78.6	0.119	1.18
			2	27.8	0.119	1.18
			2+8	3.9	0.119	1.18
	1.14	3.15	-	83.3	0.119	1.18
			2	29.6	0.119	1.18
			2+8	4.3	0.119	1.18

reference standard for accidental loads is Eurocode.

**FIELDS OF APPLICATION:**

- Shopping centres
- Congress venues
- Theatres
- Hospitals
- Schools
- Buildings open to the public, subject to crowding