

REFURBISHMENT OF HISTORICAL BUILDING VENTILATED CRAWL SPACE

Location: Sottomarina, Italy

Project: refurbishment of historical building

Structure: ventilated crawl space

Total surface: 897 sqyd

Product used: MODULO H15

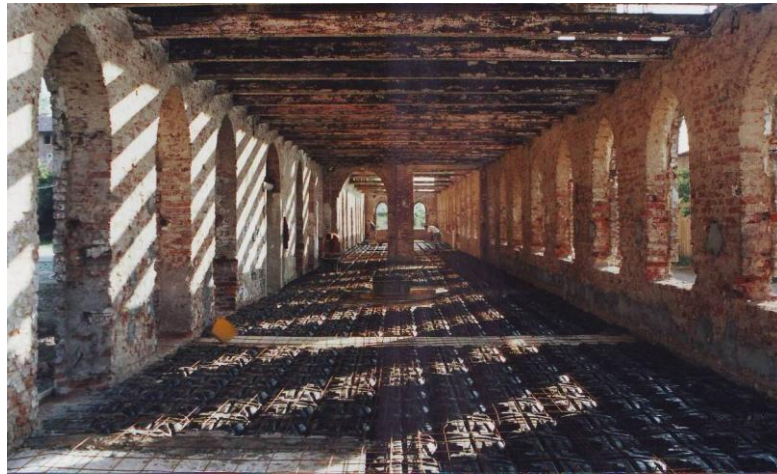


Fig. 1



Fig. 2

Modulo H15 was employed to create a crawl space in order to stop ground moisture. Geoblock was used to model the forms around the existing structures with high execution speed and low concrete consumption.