

MODULO

UNDERGROUND CAR PARK

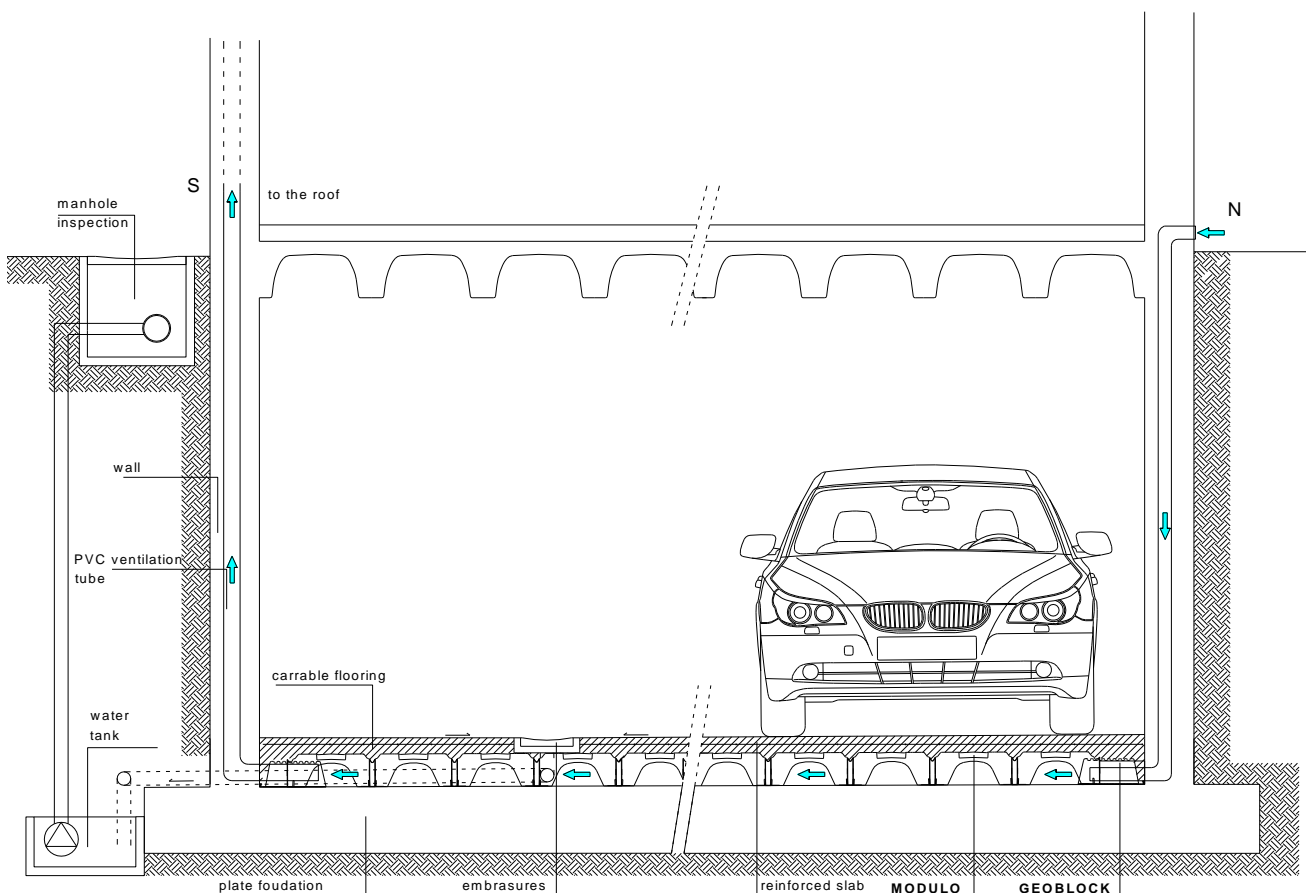
MODULO System

Modulo System is used in underground car parks to make room for the passage of pipes. Using gullies, storage tanks and pumps it is possible to collect rainwater and lead it out of the building.

The crawl space can also be used to collect rainwater in the case of storms.

Advantages

- Ventilation in all directions
- Elimination of ground moisture
- Dispersion of Radon gas
- Allows the passage of pipes and systems
- Can be used to collect rainwater
- High load-bearing capacity structure



**GENERAL TECHNICAL CHARACTERISTICS
MODULO H30 – H55**

Eurocode category	Imposed + permanent loads [lb/sqin]	Slab [in]	Lean mix [in]	Pressure on the ground [lb/sqin]	Minimum amount of reinforcing steel [sqin/ft]	Cover [in]
Cat F - Transit area for light vehicles	0.92	3.15	-	74.1	0.119	1.18
			2	26.2	0.119	1.18
			2+8	3.8	0.119	1.18
	1.07	3.15	-	83.3	0.119	1.18
			2	29.6	0.119	1.18
			2+8	4.3	0.119	1.18
	1.21	3.15	-	92.6	0.119	1.18
			2	32.8	0.119	1.18
			2+8	4.8	0.119	1.18

reference standard for accidental loads is Eurocode.

FIELDS OF APPLICATION:

Underground car parks