

# MODULO

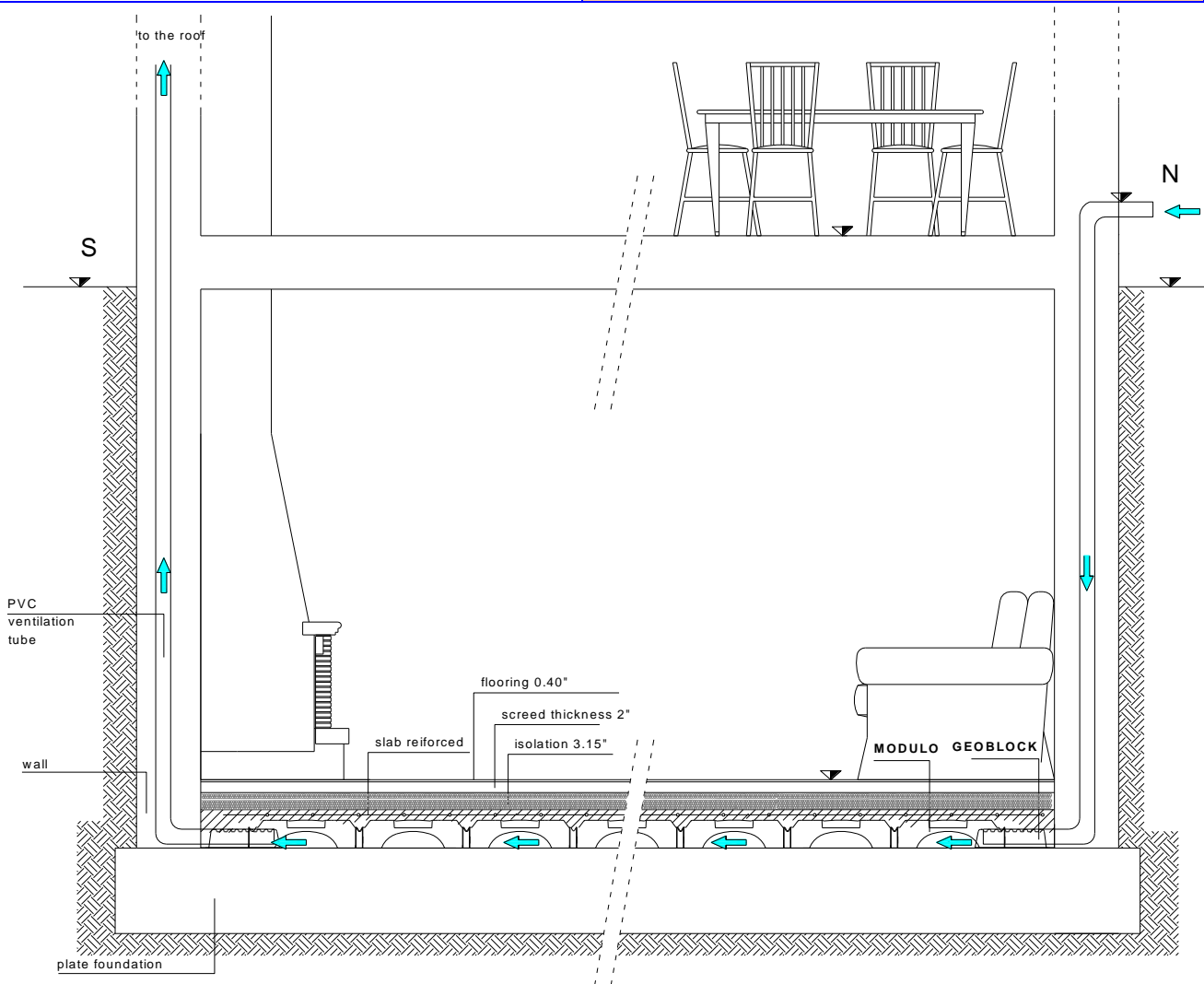
## BASEMENTS IN RESIDENTIAL BUILDINGS

### MODULO System

MODULO System is used in residential building basements to create a uniform ventilation of the crawl space, eliminating ground moisture. The crawl space created can be used for the passage of rainwater drains.

### Advantages

- Natural ventilation in all directions.
- Stop ground moisture
- Avoids dangerous concentrations of Radon
- Makes room for the passage of piping
- High load-bearing capacity



**GENERAL TECHNICAL CHARACTERISTICS**  
**Area for domestic and residential activities**  
**MODULO H15 – H25**

Eurocode category	Imposed + permanent loads [lb/sqin]	Slab [in]	Lean mix [in]	Pressure on the ground [lb/sqin]	Minimum amount of reinforcing steel [sqin/ft]	Cover [in]
FLOORS	0.43	2	Pressure on the plate foundation	39.4	0.067	1
			Pressure on the ground	1.57	0.067	1
	0.50	2	Pressure on the plate foundation	43.95	0.067	1
			Pressure on the ground	1.71	0.067	1
	0.57	2	Pressure on the plate foundation	48.64	0.067	1
			Pressure on the ground	1.85	0.067	1

reference standard for accidental loads is Eurocode.

**FIELD OF APPLICATION**

Basements in residential buildings

