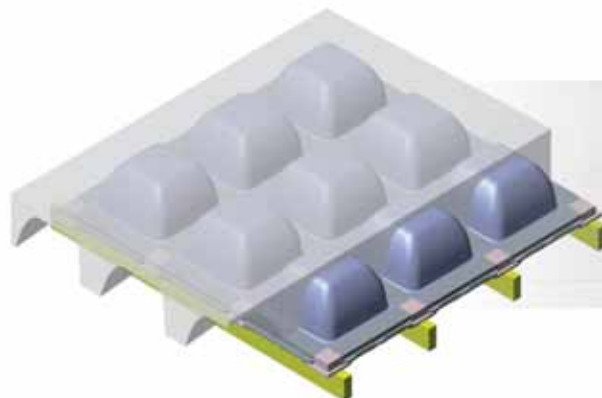




# SKYDOME®



The lightweight waffle slab formwork



casseforme  
formwork

## SKYDOME ADVANTAGES



### COST EFFECTIVE

- The void created by SKYDOME generates a significant reduction in the volume of concrete consumed vs. a solid slab. SKYDOME is effortlessly installed on H20 timber beams, reducing the forming cost of the slab.



### SAFETY

- SKYDOME is completely self-supporting, and does not require any support platform or special safety device. The system can be assembled from below, guaranteeing extra safety to the job site workers.



### TECHNOLOGY

- The special shape of the SKYDOME forms makes it possible to create waffle slabs with great span, structurally extremely efficient thanks to their low weight.



### DISMANTLING

- Concrete does not stick to plastic, making dismantling quick and easy. No forming oil is required: all the elements of the system are easily cleansed using just water.



### REUSABLE

- Thanks to its shape and to the properties of the materials, SKYDOME is reusable for many pours.



### HANDLING

- The system is extremely light and can be easily handled on-site without requiring a crane. SKYDOME can be compactly stored in limited space and does not suffer moisture.



### RESULTS

- The waffle slab can be left in sight or plastered with standard paneling



### ENVIRONMENTALLY FRIENDLY

- The Skydome system is entirely made of regenerated plastic materials.



**COST-EFFECTIVE**  
**SAFE**

# SKYDOME SYSTEM COMPONENTS

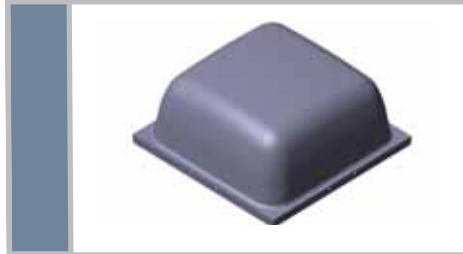
**SKYDOME H 200:**  
750 X 750 X H 240 mm - Weight: 5.30 Kg



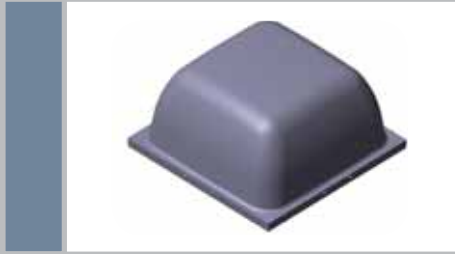
**SKYDOME H 250:**  
750 X 750 X H 290 mm - Weight: 5.50 Kg



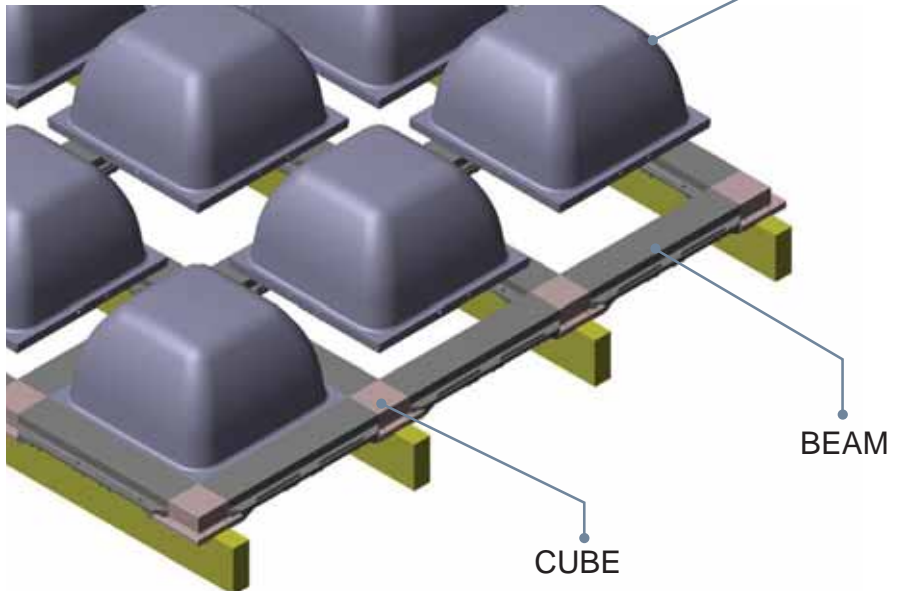
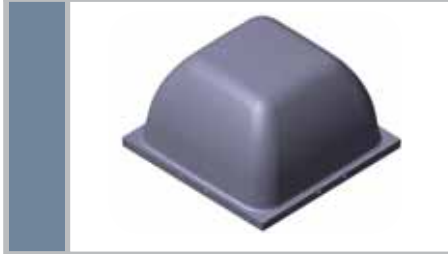
**SKYDOME H 300:**  
750 X 750 X H 340 mm - Weight: 5.80 Kg



**SKYDOME H 350:**  
750 X 750 X H 390 mm - Weight: 6.00 Kg



**SKYDOME H 400:**  
750 X 750 X H 440 mm - Weight: 6.50 Kg



**BEAM T120:**  
140 X 750 X H 100 mm - Weight: 1.80 Kg



**BEAM T160:**  
180 X 750 X H 100 mm - Weight: 2.10 Kg



**BEAM T200:**  
220 X 750 X H 100 mm - Weight: 2.40 Kg



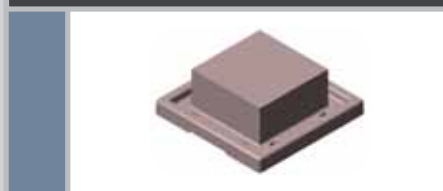
**CUBE C120:**  
150 X 150 X H 100 mm - Weight: 0.70 Kg



**CUBE C160:**  
190 X 190 X H 100 mm - Weight: 1.00 Kg



**CUBE C200:**  
230 X 230 X H 100 mm - Weight: 1.30 Kg



# SKYDOME



**SETUP**

## CHARACTERISTICS

- ▶ **TWO-WAY SLABS FOR LARGE SPANS**
- ▶ **REDUCES THE LOAD ON THE SUPPORTING STRUCTURE**
- ▶ **REDUCES PRODUCTION TIME**
- ▶ **ELIMINATES INVERTED BEAMS IN THE SLAB**
- ▶ **COMPLETELY REUSABLE FOR MANY POURS**
- ▶ **ENVIRONMENTALLY FRIENDLY**



# SKYDOME



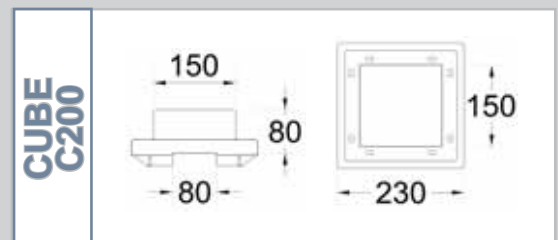
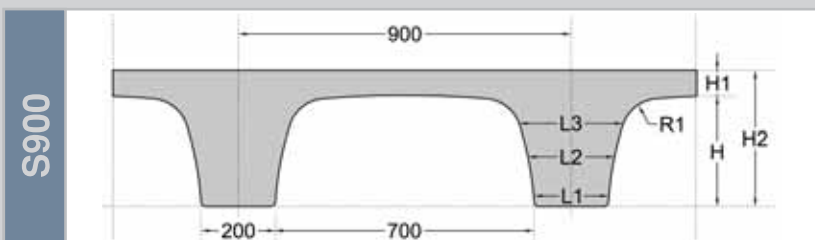
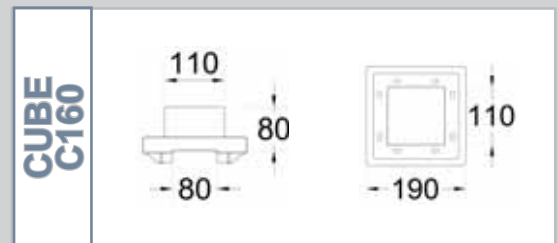
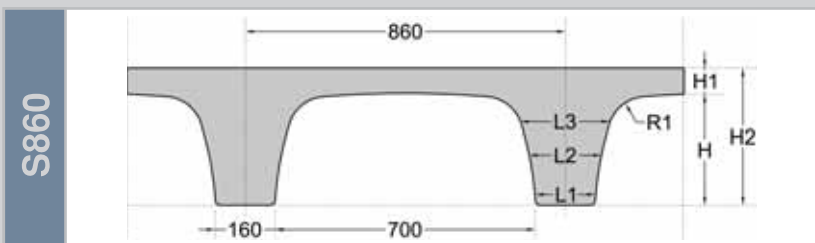
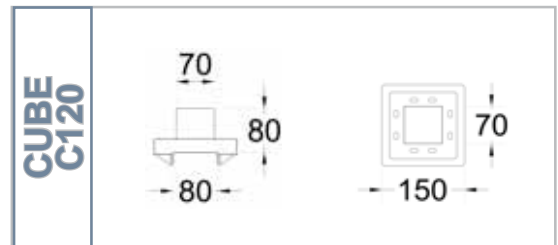
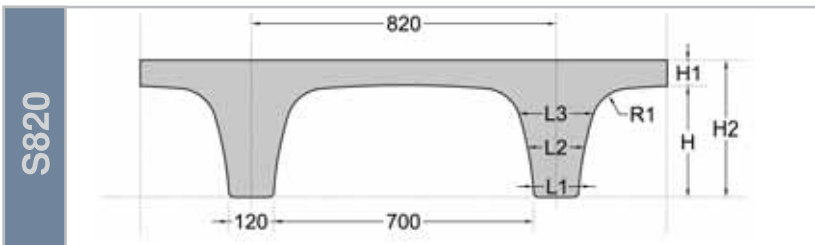
# SKYDOME TECHNICAL CHARACTERISTICS

ITEM	Ribbing width			Dome radius (mm)	Dome span (mm)	Ribbing on-centres (mm)	Concrete consumption ribbing (m <sup>3</sup> /m <sup>2</sup> )	Concrete consumption of the slab m <sup>3</sup> /m <sup>2</sup>		
	Lower (mm)	Middle (mm)	Upper (mm)					Slab thickness 50 mm	Slab thickness 100 mm	Slab thickness 150 mm
	L1	L2	L3							
Skydome H200	120	154	196	140	700	820	0.080	0.130	0.180	0.230
	160	193	237	140	700	860	0.091	0.141	0.191	0.241
	200	233	279	140	700	900	0.100	0.150	0.200	0.250
Skydome H250	120	170	213	140	700	820	0.099	0.149	0.199	0.249
	160	210	254	140	700	860	0.113	0.163	0.213	0.263
	200	250	295	140	700	900	0.125	0.175	0.225	0.275
Skydome H300	120	205	267	140	700	820	0.123	0.173	0.223	0.273
	160	245	308	140	700	860	0.139	0.189	0.239	0.289
	200	285	350	140	700	900	0.153	0.203	0.253	0.303
Skydome H350	120	263	302	140	700	820	0.151	0.201	0.231	0.301
	160	303	342	140	700	860	0.169	0.219	0.269	0.319
	200	343	384	140	700	900	0.185	0.235	0.285	0.335
Skydome H400	120	348	387	140	700	820	0.185	0.235	0.285	0.335
	160	388	388	140	700	860	0.205	0.255	0.305	0.355
	200	428	430	140	700	900	0.222	0.272	0.322	0.372

## ITEM LIST per m<sup>2</sup>

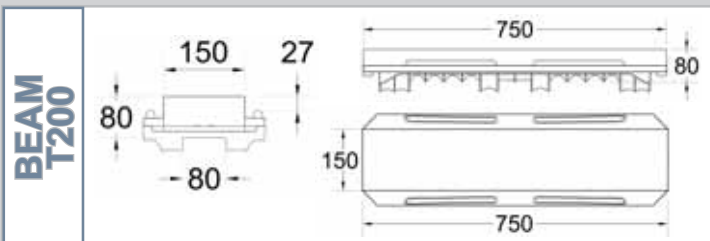
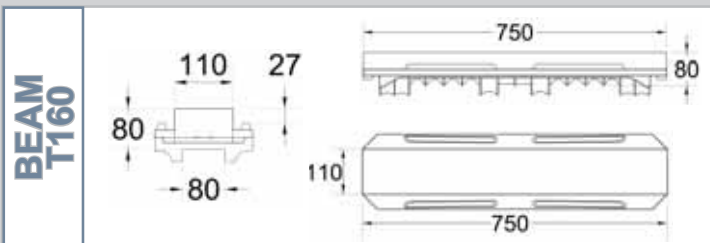
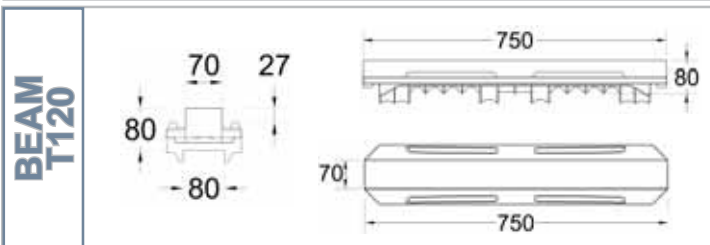


RIBBING	On centres	No. domes per m <sup>2</sup>	Type of T-beam	No. of T-beams per m <sup>2</sup>	No. of Cubes per m <sup>2</sup>
120	820	1.50	SKYDOME T120	3.00	1.50
160	860	1.35	SKYDOME T160	2.70	1.35
200	900	1.23	SKYDOME T200	2.46	1.23

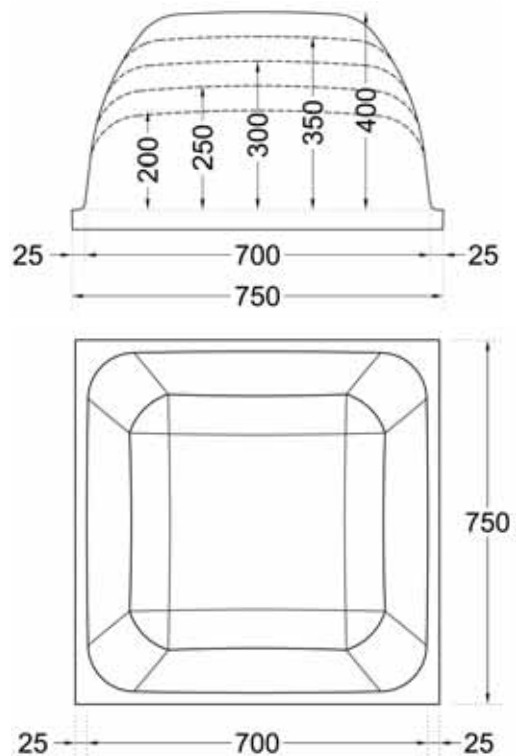


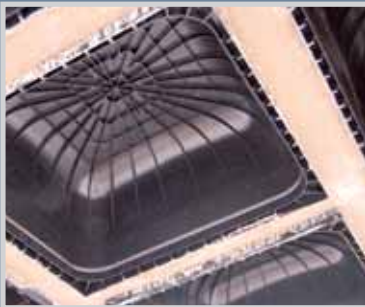
# SKYDOME TECHNICAL CHARACTERISTICS

Max. slab span (m)	Beam width L1 (mm)	Skydome depth (mm)	Slab thickness H1 (mm)	Total slab thickness H2 (mm)	Self weight kg/m <sup>2</sup>	Live load kg/m <sup>2</sup>	Steel section, ribbing (cm <sup>2</sup> )	No. of bars and diameter	Steel section, slab (cm <sup>2</sup> )	Wire mesh characteristics
5,00	120	200	50	250	325	400	2,26	2dn12	2,01	DN8/200X200
6,00	160	200	50	250	353	400	2,26	2dn12	2,01	DN8/200X200
6,00	160	250	50	300	408	400	3,08	2dn14	2,01	DN8/200X200
6,50	160	250	50	300	408	400	3,08	2dn14	2,01	DN8/200X200
7,00	160	300	50	350	473	400	4,02	2dn16	2,01	DN8/200X200
7,50	160	300	50	350	473	400	4,02	2dn16	2,01	DN8/200X200
8,00	200	350	50	400	588	400	4,02	2dn16	2,01	DN8/200X200
8,50	200	350	50	400	588	400	4,02	2dn16	2,01	DN8/200X200
9,00	200	400	50	450	680	400	5,09	2dn18	2,01	DN8/200X200
9,50	200	400	50	450	680	400	5,09	2dn18	2,01	DN8/200X200
10,00	200	400	50	450	680	400	6,03	3dn16	2,01	DN8/200X200
10,50	200	400	50	450	680	400	6,03	3dn16	2,01	DN8/200X200
11,00	200	400	100	500	805	400	8,04	4dn16	2,01	DN8/200X200
11,50	200	400	100	500	805	400	8,04	4dn16	2,01	DN8/200X200
12,00	200	350	150	500	838	400	9,42	3dn20	2,01	DN8/200X200
12,50	200	350	150	500	838	400	9,42	3dn20	2,01	DN8/200X200
13,00	200	400	150	550	930	400	9,42	3dn20	2,01	DN8/200X200
13,50	200	400	150	550	930	400	12,57	4dn20	2,01	DN8/200X200
14,00	200	400	150	550	930	400	12,57	4dn20	3,14	DN10/200X200
14,50	200	400	150	550	930	400	12,57	4dn20	3,14	DN10/200X200
15,00	200	400	150	550	930	400	12,57	4dn20	3,14	DN10/200X200
15,50	200	400	150	550	930	400	13,70	4dn20+1dn12	3,14	DN10/200X200



SKYDOME





Disclaimer: the values shown in this brochure are for guidance only. They are not meant to be used for design criteria. Their use and reliance thereon for any purpose by anyone is entirely voluntary and at the sole risk of the user. GEOPLAST is not responsible for any loss, claim, or damage resulting from their use.

## CUSTOMER SERVICE: PROJECT DEVELOPMENT

Send your projects in DWG format to [ufficiotecnico@geoplast.it](mailto:ufficiotecnico@geoplast.it)

## ASSEMBLY HANDBOOK AND TECHNICAL SPECIFICATIONS

Available in our website [www.geoplast.it](http://www.geoplast.it) in the "Documents and data" section

Authorized dealer:



Manufactured by:  
**GEOPLAST S.p.A.**  
 Via Martiri della Libertà, 6/8  
 35010 Grantorto (PD) - Italy  
 tel +39 049 9490289 - fax +39 049 9494028  
 e-mail: [geoplast@geoplast.it](mailto:geoplast@geoplast.it) - [www.geoplast.it](http://www.geoplast.it)